



PERMETHRIN

Lice Treatment Creme Rinse

# THE FACTS OF LICE

Please read all information before using Nix® Creme Rinse.

If you or a member of your household has head lice, don't panic. Keep calm.

Anyone can get head lice - it has nothing to do with cleanliness or poor hygiene. Head lice are treatable and very rarely cause serious health problems.

### What are head lice?

- head lice are small insects that live and feed on the human scalp
- they may get as big as sesame seeds and are brown
- lice do not fly or jump from one person to another. They can only crawl.

### What are nits?

- nits are lice eggs laid on the hair near the scalp. One louse may lay over 100 nits.
- nits are oval shaped, tiny and greyish-white
- they are attached to hair with a waterproof glue-like substance that cannot be washed out or blown away

Because nits (eggs) hatch in about one week, all nits must be removed to stop lice.

### How do head lice spread?

- head lice spread easily from close head-to-head or hand-to-head contact with persons who have lice
- they may also spread by sharing hats, helmets, scarves, headphones, brushes, combs, bedding and clothing

### How do you know if you have lice?

- itching is the most common symptom
- scratching behind the ears or the back of the neck is a sign that you should check for head lice
- scabs or blood spots may be seen

### How do you prevent the spread of lice?

- do not share or borrow personal items like combs, brushes, or headbands
- do not share or borrow hats, sweaters, coats, scarves, helmets, headphones, pillows or stuffed animals
- store hats in coat sleeves and hang coats separately, so that they do not touch other people's hats and coats
- wash under fingernails when you first see lice or nits (eggs)
- check your child's head daily when you hear of a lice outbreak in day care or school

## How to use NIX® Creme Rinse?

### Inspect

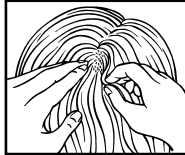
If you suspect head lice - check. Head lice may be hard to locate because they avoid light. Nits are easier to see.



- check each household member with a magnifying glass in bright light for lice/nits (eggs)
- look for tiny nits near scalp, beginning at back of neck and behind ears
- examine small sections of hair at a time
- unlike dandruff which moves when touched, nits stick to the hair
- if either lice or nits are found, treat with Nix Creme Rinse

### Treat

- wash hair with a shampoo without conditioner. Do not use a shampoo that contains a conditioner or a conditioner alone since this may decrease the activity of Nix®. Rinse with water.
- towel dry hair so it is damp but not wet
- shake the bottle of Nix® well
- completely saturate the hair and scalp with Nix®. Begin to apply Nix® behind the ears and at the back of the neck.
- keep Nix® out of the eyes. Protect the eyes with a washcloth or towel.
- leave Nix® on the hair for 10 minutes, but no longer
- rinse with warm water
- towel dry hair and comb out tangles
- if live lice are seen seven days or more after the first treatment, a second treatment should be given



### Remove Lice/Nits Treatment kills lice but does not remove the nits.

- remove nits by combing the hair with the premium comb provided. Remaining nits may be removed by hand (using a throw-away glove), or cutting the nits out.
- use the nit comb provided and make sure the hair remains slightly damp while removing nits
- if the hair dries during combing, dampen it slightly with water
- part the hair into 4 sections. Work on one section at a time. Longer hair may take more time (1-2 hours).
- start at the top of the head on the section you have picked
- with one hand, lift a 1-2 inch wide strand of hair. Get the teeth of the comb as close to the scalp as possible and comb with a firm, even motion away from the scalp to the end of the hair.
- use clips to pin back each strand of hair after you have combed out the nits
- clean the comb completely as you go. Wipe the nits from the comb with a tissue and throw away the tissue in a sealed plastic bag to prevent the lice from coming back.



- after combing, recheck the entire head for nits and repeat combing if necessary
- check the affected head daily to remove any nits that you might have missed

### Clean home and personal items

After using Nix® Creme Rinse, it is very important to clean personal items and your home to prevent the spread of lice. Nits may live away from the human head for about 7-12 days. Lice may live away from the human head for about 1 day.

- all personal head gear (hats, hair ribbons, etc.), scarves, coats, towels and bed linens should be washed in hot water (above 130°F), then dried in the dryer using the hottest cycle for at least 20 minutes.
- personal combs, including nit combs, and brushes should be soaked in hot water (above 130°F) for at least 10 minutes.
- personal articles such as clothing, bedspreads, blankets, pillows or stuffed animals that cannot be washed should be dry-cleaned or sealed tightly in a plastic bag for a period of at least 4 weeks. Items should be taken out of the plastic bag outdoors and shaken out very hard before using again.
- for anything you cannot wash, dry-clean or store in a plastic bag, use a lice control spray.
- vacuum everywhere. Vacuum all carpets, mattresses, upholstered furniture and car seats that may have been used by infested household members.



### Warnings

#### For external use only

**Do not use** • on children under 2 months of age • near the eyes • inside the nose, ear, mouth, or vagina • on lice in eyebrows or eyelashes. See your doctor.

#### Ask a doctor before use if you are

- allergic to ragweed. May cause breathing difficulty or an asthmatic episode.

**When using this product** • keep eyes tightly closed and protect eyes with a washcloth or towel • if product gets into the eyes, immediately flush with large amounts of water • scalp itching or redness may occur

**Stop use and see a doctor if** • breathing difficulty occurs • eye irritation occurs • skin or scalp irritation continues or infection occurs

**If pregnant or breast-feeding,** ask a health professional before use.

#### Keep out of reach of children.

If swallowed, get medical help or contact a Poison Control Center right away.

Questions or comments?  
call 1-888-LICE LINE (1-888-542-3546),  
Monday to Friday, 9 AM - 5 PM EST  
www.nixlice.com

Dist. by Insight Pharmaceuticals Corporation  
660 White Plains Road, Suite 250, Tarrytown, NY 10591  
A Prestige Consumer Healthcare company  
©2023 Trade dress is owned by Insight  
Pharmaceuticals Corporation. All rights reserved.  
NXUS003601

PERMETHRIN  
Lice Treatment Creme Rinse

# NIX®

# NIX®

PERMETHRIN  
Lice Treatment Creme Rinse