



Lice Treatment
All-in-One Shampoo

Lice prevention
Daily Leave-In Spray

TREAT: When lice are present, use Nix Ultra® Shampoo and Nix® Lice Removal Comb to kill the lice and eggs.

PREVENT: If lice are not present or after treating and confirming lice are not present - use Nix® Lice Prevention Spray to keep lice away. Use daily for ongoing prevention.

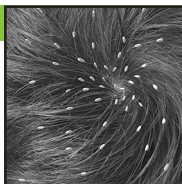
Nix Ultra® Lice Treatment All-In-On Shampoo

Nix Ultra® Shampoo All-In-One Treatment effectively kills head lice, including harder-to-eliminate "Super Lice", and their nits, and cleans hair. No additional shampoo step is necessary after treatment. Please read leaflet carefully before using Nix Ultra® Shampoo.

We at Nix® understand that having lice is more than just a hassle. It can be a nightmare, but eliminating lice doesn't have to be. We know how to remove lice and can help get your household back to normal. See results. Fast!

HOW DOES IT WORK?

Nix Ultra® Shampoo is a pesticide free solution applied to dry hair that kills lice through a physical mode of action by coating the lice and clogging the spiracles through which they breathe and destroying the organism's ability to excrete water.



THINGS YOU MAY NEED TO GET STARTED

- Bright light or magnifying glass
- Paper towels or tissue
- Wash cloth or towel
- Hair clips
- Clock or timer
- Sealable plastic bag
- Something to keep your child busy (movie, game, etc.)

DETECT

Using Nix® Lice Removal Comb, look closely at the scalp. Check each household member in bright light. Start at the base of the neck and divide the hair into small sections as you search for lice and their nits (eggs).

- Lice are usually light brown in color and look like sesame seeds. They often move quickly and can be found on the scalp or hair.
- Nits (eggs) are yellow, brown or tan. They look like tiny seeds and are firmly attached to the hair shaft. Nits do not move.
- Look for tiny nits near scalp, beginning at back of neck and behind ears.

- Examine small sections of hair at a time.
- It is important to check all family members.
- **If lice or nits are found, remove with Nix Ultra® Shampoo and Nix® Lice Removal Comb**

INDICATIONS FOR USE

Nix Ultra® Shampoo All-in-One Lice Treatment is intended to kill and remove head lice and their eggs from adults and children 12 months and older.

CONTRAINDICATIONS

- Not for use by people with sensitivity to mineral oils
- Intended for head lice (not pubic lice)
- Not for children under 12 months

PRECAUTIONS

- Care should be taken to avoid contact with the eyes. Protect eyes with a washcloth or towel.
- Do not use this product if the scalp is already very irritated or injured.
- Do not use this product under occlusion e.g. by covering up the hair with a cap or wrapped foil.
- Do not use this product for longer than directed (10 minutes).

WARNINGS

- Keep out of reach of children.
- Stop use if signs of a rash or irritation occur.
- Avoid contact with eyes and mucous membranes (mouth and nose). This product may cause severe eye irritation. In case of eye contact, immediately rinse eyes with plenty of water.
- For external use only. Do not swallow solution. If swallowed, seek medical help or contact a Poison Control Center (1-800-222-1222) immediately.
- **Keep treated hair away from fire, flame, or other hot objects. Do not smoke during use or treatment.**
- If spilled, clean up immediately. Shampoo can be slippery.



INSTRUCTIONS FOR USE

Important: Read entire leaflet before use.

For complete instructions in Spanish, refer to our website at www.nixlice.com

STEP 1 - Spread the Shampoo over dry hair

Apply Nix Ultra® Shampoo to scalp and **dry** hair making sure the hair is completely covered. Massage it in well and make sure the hair close to the scalp is also treated. Ensure coverage behind ears and on back of neck. **Leave Nix Ultra® Shampoo in hair for 10 minutes.**

Nix Ultra® Shampoo is safe and non-toxic but care should be taken to avoid contact with eyes. Protect eyes with washcloth or towel.

Step 2 - Wash out the shampoo

Rub some water into the treated hair and work up a lather (foam). Rinse out the foam with lukewarm water. Rinse thoroughly until all the shampoo is rinsed out. Towel dry the hair. There is no need to wash the hair again with a regular shampoo. For those with longer hair, curly hair or hair that easily tangles you may want to use a conditioner after rinsing out Nix Ultra® Shampoo and/or detangle hair using a brush or wide-tooth comb prior to using lice comb in step 3. Wash brush or wide-tooth comb after use in hot water (above 130°F) to remove lice and nits.

Step 3 - Comb the hair with lice comb

Use **Nix® Lice Removal Comb** (included) to remove nits and lice.

Part hair into four sections. Comb one section at a time. Start at top of head. Lift a 1-2 inch wide section of hair. Place teeth of comb as close to scalp as possible and comb with firm, even motion away from scalp to the end of the hair. Use clips to pin back each section of combed hair.

Clean comb during use by wiping lice and nits onto clean tissue or dry paper towel. Discard tissue or paper towel into sealable plastic bag. After combing, recheck the entire head for lice and nits.

When treatment is completed and all remaining lice and nits have been wiped from the comb, seal and discard plastic bag containing nits and lice. Soak the Nix® Lice Removal Comb in hot water (above 130°F) for 10 minutes before subsequent use. Do not boil comb.

Check hair after 7 days. If lice or nits are present, repeat steps 1-3.

Ingredients Fragrance, Laureth-4, Mineral Oil, MIPA-Laureth Sulfate, Propylene Glycol

Nix® Lice Prevention Daily Leave-in Spray

Safe For Everyday Use*

Defends & Repels Super lice

Use Nix® Lice Prevention Daily Leave-In Spray:

- Only after checking to ensure no lice are present. If lice are present use Nix Ultra® Shampoo as directed.
- During lice outbreaks (peak lice season is typically back-to-school)
- To protect the whole family when a family member has head lice
- Year round to repel lice & help prevent infestations

Lice can spread very easily from person to person through head-to-head contact or through shared clothing or personal items (such as a hat, towel, or hairbrush).

Nix® Lice Prevention Daily Leave-In Spray is specially designed to repel lice, including Super Lice, through a blend of essential oils such as Rosemary, Citronella, and Lemongrass.

DIRECTIONS FOR USE

READ ENTIRE INSERT BEFORE USE.

USAGE: Use up to two times daily to repel head lice. **For children under 2, consult your physician. SHAKE WELL.** Spray liberally onto washed towel-dried hair; evenly covering the entire head. The number of sprays per



DIRECTIONS FOR USE (cont.)

application will vary with hair length and thickness. Avoid direct application to surrounding skin and scalp. Leave on hair and let dry gently. Also suitable for use on dry hair. Light scent disappears quickly when dry.

PRECAUTIONARY STATEMENTS: Keep out of reach of children. For external use only. Do not allow children to apply this product to themselves. Do not use if scalp is already very irritated or injured.

CAUTION: May cause eye irritation. Avoid contact with eyes. May cause skin irritation.

FIRST AID:

IF IN EYES: Rinse thoroughly with water.

IF ON SKIN: If skin irritation occurs, discontinue use and wash treated skin with soap and water. If discomfort persists, call your doctor.

STORAGE AND DISPOSAL: Storage: Store in a cool dry place. Protect from freezing. Disposal: Do not reuse or refill this container. Place in trash or recycle if available. This product has not been registered by the U.S. EPA. Insight Pharmaceuticals Corporation represents that this product qualifies for exemption from registration under FIFRA 25(b).

THE FACTS OF LICE

Anyone can get head lice – It has nothing to do with cleanliness or poor hygiene. Head lice are treatable and very rarely cause serious health problems.

What are head lice?

- Head lice are small insects that live and feed on blood from the human scalp.
- Head lice may get as big as sesame seeds.

What are nits?

- Nits are lice eggs laid on the hair near the scalp.
- Nits are oval shaped, tiny and yellow, brown, or tan, but appear white after hatching.
- Nits attach to hair with a waterproof glue-like substance that cannot be washed out or blown away.

What are Super Lice?

- Harder-to-eliminate Super Lice are lice that have developed resistance to traditional pesticide lice treatments. The number of Super Lice continues to increase in the United States.

Nix Ultra® Shampoo and Lice Removal Comb are specially designed to kill both Super Lice and regular lice, including eggs.

How to check for Lice and Nits?

- Check each household member in bright light.
- Watch for movement. Head lice may be hard to locate because lice avoid light.
- Look for tiny nits near scalp, beginning at back of neck and behind ears.
- Examine small sections of hair at a time.
- It is important to check all family members.
- **If lice or nits are found, use Nix Ultra® Shampoo and Lice Removal Comb.**

How do head lice spread?

- Head lice spread easily from close head-to-head (e.g., “selfies”) or hand-to-head contact with persons who have lice.
- Lice may also spread by sharing hats, helmets, scarves, headphones, brushes, combs, bedding and clothing.

How can the spread of lice be prevented?

- Do not share or borrow personal items like combs, brushes or headbands.
- Do not share or borrow hats, sweaters, coats, scarves, helmets, headphones, pillows or stuffed animals.
- Store hats in coat sleeves or pockets. Hang coats separately, away from other people's hats and coats.
- Wash under fingernails if lice or nits are seen.
- Inspect children for lice daily when a lice outbreak occurs at school or day care.

* When used as directed.

Dist. by Insight Pharmaceuticals LLC
Tarrytown, NY 10591, a Prestige Consumer Healthcare company. ©2022 Trade dress is owned by Insight Pharmaceuticals LLC. All rights reserved.
NXUS032601

QUESTIONS?

Call our expert hotline **1-888-LiceLine (1-888-542-3546)**

