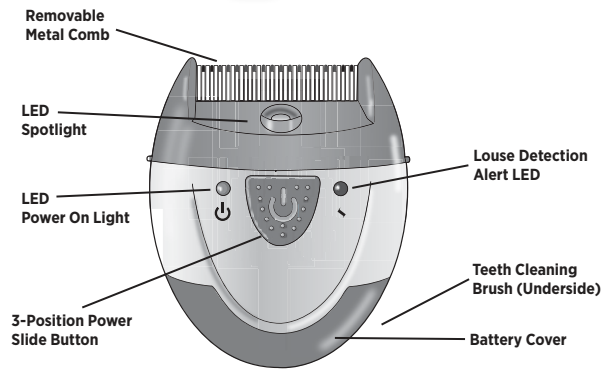


# Nix Electronic Lice Comb



## INTRODUCTION

**THANK YOU FOR PURCHASING THE NIX ELECTRONIC LICE COMB. READ THESE INSTRUCTIONS CAREFULLY TO ENSURE PROPER AND SAFE OPERATION OF YOUR COMB.**

## INTENDED USE

The Nix Electric Lice Comb is intended to remove and/or kill lice and nits from head (scalp) hair.

## WHEN DO I NEED TO USE

**HEAD LICE** are tiny, wingless, parasitic insects that live and feed on blood from the host's scalp. NITS are the small lice eggs and empty egg sacks left behind after the lice hatches. Lice and nits are easiest to detect at the neckline and behind the ears. Head lice affects millions of people each year, especially preschool and elementary school-aged children and their close contacts. Infestation most commonly spreads through close personal contact and by sharing personal belongings such as hats and clothing.

Head lice have a life cycle of about 40 days. Each louse is responsible for about 200-300 eggs (nits) which will be laid during this lice life-cycle and will hatch within 10 days. Lice have been among us for thousands of years. Various chemical treatments have been used to eradicate infestations, including DDT and other formulas containing strong chemicals which are typically applied direct to children's scalps. Over time head lice have built up immunities to some treatment shampoo formulations. The NIX Electronic Lice Comb kills adult lice effectively without use of chemical shampoos. Careful review and practice of the instructions for this device can help offer your family a safe, effective and chemical-free solution for a lice infestation.

## INFESTATION SYMPTOMS

The infected person will typically experience a tickling feeling in the hair, intense itching, and red bumps on the scalp, neck or shoulders. Lice cement their eggs firmly into the base of hair shafts, very close to the scalp. They are extremely tiny, about the size of a strawberry seed, but can be up to 1/8 inch (3 millimeters) in size.

## BACKGROUND - ADDITIONAL INFORMATION

### HOW DOES AN ELECTRONIC LICE COMB WORK?

The NIX Electronic Lice Comb works by transmitting a small electrical charge to the comb's metal teeth. When the metal teeth are combed through dry hair, this electric charge will kill adult lice. The red Louse Detection Alert LED will illuminate when a louse had been detected, killed and caught in the metal teeth. Simply remove the louse; the light will turn off and recommence combing the hair.

The NIX Electronic Lice Comb kills ADULT lice. The combing will help remove small nits, but does not kill the eggs and some may remain attached to the hair follicle. It is recommended that combing treatments are repeated every 2-3 days for 10 days to ensure that all lice have been eliminated.

## WARNINGS & PRECAUTIONS

- NIX Electronic Lice Comb should be used on head hair (scalp) only; body and genital lice are not the same as head and scalp lice and require difficult treatments
- Do not use this device on pets; pets cannot carry human head lice and should not be treated with this product
- Do not use on wet or oily hair
- Do not hold metal combs with fingers when the POWER is switched on
- The device is not water proof. Do not immerse it in any liquid
- Never place in the mouth or on any other body parts except on head hair
- This device should not be operated by or applied to persons with epileptic conditions and/or heart-failure patients
- The appliance may disrupt the operation of electronic health devices
- Some sensitive persons may feel slight tingling (sometimes this can be caused from perspiration); there is NO electric shock risk
- Lice Comb should be used on children by adults only
- Avoid dropping and other heavy impact on the lice comb

## DIRECTONS FOR USE

For best performance and optimal efficiency of this device, please read and conform strictly to the following instructions:

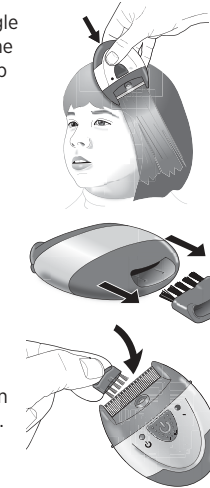
### Before Use:

- Hair must be dry before using this electronic device. This device should not be used simultaneously with any shampoos or other treatments.
- For best results, hair should be free of styling product, i.e. gels or mousses.
- Before treatment, comb the hair thoroughly with a regular comb to free all knots. The tines of the lice comb are purposefully very close and may have difficulty combing the hair of the hair has not been previously combed.

As with most common lice treatment methods, it is recommended that the treatment be repeated over the course of the egg nit hatching (10 days) to ensure the infestation is full eradicated. For maximum effectiveness, repeat the treatment every 2-3 days for 10 total days.

## Operating the Lice Comb:

- This device has a 3-position power switch:
  - OFF - slide all the way back, away from the comb teeth
  - ON - slide one click forward; green LED power light illuminates
  - ON with SPOTLIGHT - slide forward towards the comb teeth; green power light illuminates and bright LED spotlight illuminates
- Hold the NIX comb at a 45-degree angle (the ON button is facing up towards the user) and start combing with the comb teeth nearwhat the hair-roots. The SPOTLIGHT can help see the lice in low light setting oron those persons with dark hair.
- When the comb has trapped and killed a louse, the red Louse Detection Alert light will illuminate.
- Stop combing the hair, and remove the louse from the comb teeth. The brush located on the underside of the device can help clean the teeth.
- After the louse is clear, the light will turn off and the comb is ready for use again.



Limitation: Will not operate on wet or excessively oily hair.

## TROUBLESHOOTING

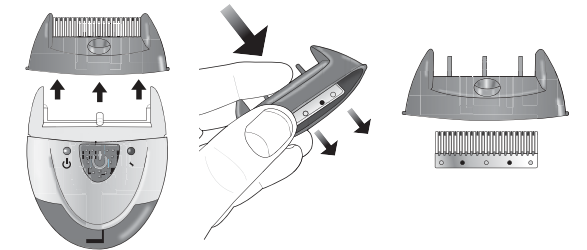
PROBLEM	POSSIBLE CAUSE	POSSIBLE SOLUTION
Red LED stays on	Dirt caught between metal teeth	Clean the metal comb
	Low Battery	Replace battery
	Metal comb is wet or moist	Clean or dry
Louse caught but red LED is not on	Dirt/lice on comb the comb	Clean the metal comb
	Lice too small or off the comb	Lice is destroyed, keep combing

## STORAGE & HANDLING

### CLEANING & STORAGE

Cleaning: The metal comb can be cleaned with the included mini brush or may be cleaned with rubbing alcohol if removed from the device housing. To remove the metal combs, remove the plastic housing surrounding the combs. Then gently push the combs through the housing. Wipe the combs with a cloth with rubbing alcohol (70% isopropyl alcohol) and allow to air dry before reassembly.

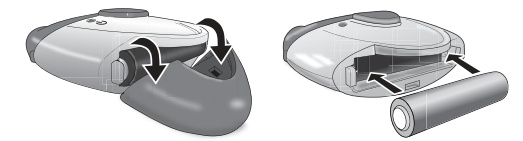
Storage: Store the unit in a secure, dry, dustfree place when not in use. Avoid extreme temperatures. Do not attempt to disassemble the unit.



### BATTERY INSTALLATION

**This device comes complete with 1 AAA battery.**

- Remove the battery cap by carefully tilting the cover down and pulling gently.
- Remove and replace the battery, taking care to note the proper polarity.
- Replace the battery cover.
- It is recommended to remove the battery if the unit will not be used for an extended period of time.



Always follow local regulations for proper disposal of batteries.

Have questions?  
Call our expert hotline 888.542.3546

INSIGHT Pharmaceuticals, Corp.  
Trevoze, PA 19053 © 2013

61-16-363A nixlice.com